









Technology & Innovation

# Stay State-of-the-Art with your Software and AI Challenges

We provide bottom line services, software projects, solutions and cloud-native platforms by advising, consulting, development, deployment and maintenance technologies complemented by hybrid AI services.

## Advisory

With 30+ years of experience, we help you to answer the vital questions in today's business landscape through digitalization.

## Consulting

We enable you with the competitive advantage of modern AI and Software Technology from concepts to production.

## Development

We specialize in building hybrid, cloud-native microservices, solutions and platforms based on out-of-the-box functionality from day one.

## Production & Service

We go the full mile and provide production ready results, deployment and maintenance from one hand.



Our Output

# Advisory

## Build or Buy

We help you to navigate to the AI and software market to identify the most cost-efficient set of [building blocks](#) to solve your challenges.

## State-of-the-Art AI Technology

[30+ years](#) AI Technology experience and strong networks of vendors, development and open-source communities. Brought knowledge through all building blocks of modern cloud-native tech stacks.

## From concepts to production

If you are a start-up or a multinational highly regulated enterprise, with our experience from defence, financial services, manufacturing and many other domains and industries, [we understand](#) the needs and obligations.

## Factory vs. Silos

We apply AI and Software Technology with more of a holistic approach and enable deep integration of such technologies through the organization. We build [Software and AI Factories](#) instead of Silos.



Our Output

# Consulting

## Hands-on and Bottom Line focus

We are result driven and focus on the **bottom line output**. Agile, deep and broad but pragmatic. Actionable steps and concepts that allow delivery asap.

## Tailored design based on standards

It is very important to adapt and to provide **tailored results** without the hassle that would come with highly customized solutions. We focus on standard building blocks and tailor those with orchestration.

## Building end-to-end

We build and target end-to-end results. The full mile from **design to production**. From strategy and concepts to the final solution, we always ensure that the next step ahead is possible in the conclusion.

## Perpetual Motion

Each step has to provide the foundation for the steps ahead. We always keep the **full picture** present and ensure that all pieces work continuously together at a rapid tempo.



Our Output

# Development

## Cloud-native Microservices

Scalability and changeability are a constant need and advantage. Modern technologies and architectures allow to achieve those, but are complex in the detail. We bring those capabilities [to the table cost-free](#) and out-of-the-box .

## Quick delivery

Our out-of-the-box solutions and services [cover up to 85%](#) of the needed software stack. That allows us to focus on your business cases instead of software engineering tasks. Use bullet-proof platforms instead of inventing over and over again.

## 30+ years

Building [relevant experience](#) is a challenge on it's own. We were lucky enough to collect those by building mission critical solutions for our partners, collaborators and clients through 30+ years. All our solutions are deployed to production.

## Cost-free lifetime license

As we bring software along with our frameworks and solutions, we provide them [cost-free](#) with a [lifetime](#) license for commercial use. We believe not just in open-source but also in sharing proven assets with our partners and clients.





Our Output

# **P**roduction & Service

## Ready for production

Nearly 80% of AI Software projects do not go live and in production. Proof of concepts (PoC) and Minimal viable Product (MVP's) phases do not achieve the [target ROI](#). AI projects need different approaches and methods.

## Stay up to date

AI and software technology changes fast, mostly even while implementation and development is on-going. Our architecture and design allows us to even [adapt new technology](#) while we implement your AI and software factory.

## Enhance your IT capabilities

Modern infrastructure is a challenge for any IT team. We can enhance those capabilities and fit in to existing structures and teams. While your core systems may have long release cycles we can [add highly agile cloud-native capabilities](#) in a short timeframe.

## Maintain your advantages

New technologies can provide new advantages while older technologies turn into disadvantages. We help you to [stay on top of your priorities](#) and proactively keep our clients on the edge of their game with enabled software and AI technologies.



Collaborators

# Complementary Services

Strong and established partners to serve all domains and industries



We maintain a [strong partner network](#) for decades. From technology vendors, regional services, start-ups to domain and industry experts.



Out-of-the-box

# 30+ **cost-free** Microservices

Use our existing microservice architecture and platform as your enhanced booster.

Get your projects up and ready in days with **state-of-the-art** AI services.

Highlights

U2D.ai  
extNLP



U2D.ai  
extNER



U2D.ai  
Translation



U2D.ai  
convLayout



U2D.ai  
AutoML



U2D.ai  
docClassifier



U2D.ai  
Summary



U2D.ai  
Segmentation



U2D.ai  
ConciseConcepts



U2D.ai  
Domains



U2D.ai  
AI Platform





Use cases

# Delivering Turn-key Solutions

Broad range of use-cases in many different domains and industries.

- Website, Web and Mobile Platforms
- Data Analytics & AI
- Blockchain
- Process Automation
- Dashboards, CRM, SaaS
- CI / CD & DevOps Automation
- AI Solutions and Platforms
- Internet of Things & Smart Devices
- Modernization



References

# Clients

where we provided our medicine for software and AI challenges



Zen Tax



Plugbooking





AI Platform

# Demo

Out-of-the-box Services and Framework

Let's get some hands on the U2D AI Platform and the included features and functions.

U2D Team - From people for people

# Human Factor

The people behind our successful projects

A wonderful group of human beings, authentic, curious, ambitious and driven. They **love** and **live by technology** and are fun to work with. We embrace the Team of Teams approach and ensure the success of every single project we do.



Olena

Head of  
Marketing & Sales



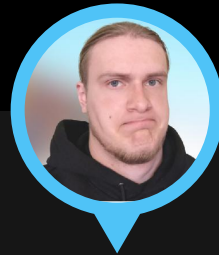
Vitaly

Head of  
Technology



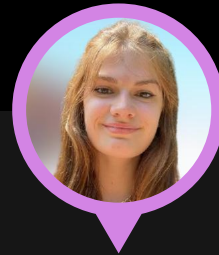
Irina

MD, Founder  
Head of Staff



Valentyn

Head of System  
Architecture



Kate

Head of  
Projects & Product



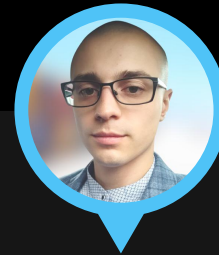
Stefan

MD, Founder  
Head of AI



Susanne

MD, Founder  
Head of Finance



Eduard

Head of Core &  
Frameworks



Dana

Head of  
Customer Success



Vadim

Head of DevOps &  
Infrastructure





# Thank you!

## Contact

📞 +49-171-3127-462

✉️ stefan@u2d.ai

🌐 [www.u2d.ai](http://www.u2d.ai)